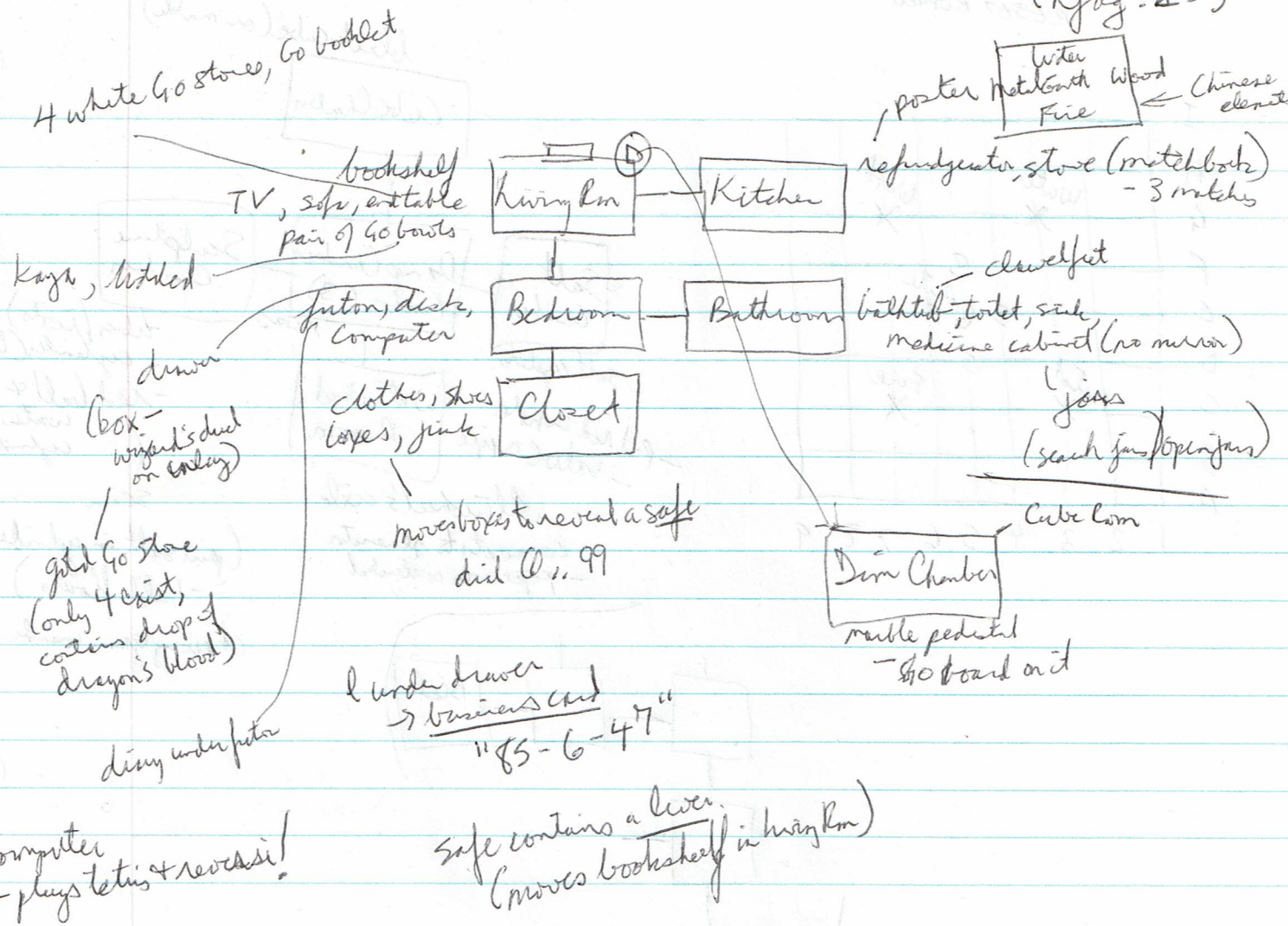


Not Just A Game

(njag - 25)



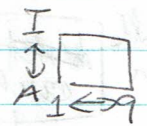
booklet - 180 white + 181 black stones

- black moves first, beginners use 9x9 board

books - egg = salt flats

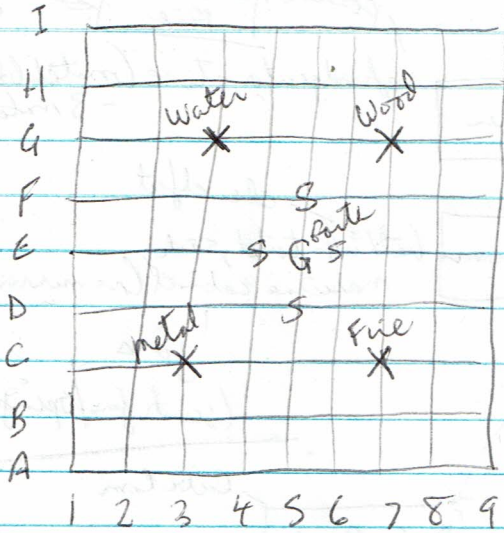
- melting pts

	°C	°F
Copper	1083	1982
Gold	1064	1948
Platinum	1772	3222
Silver	962	1764
Steel	1535	2795
Titanium	1660	3020

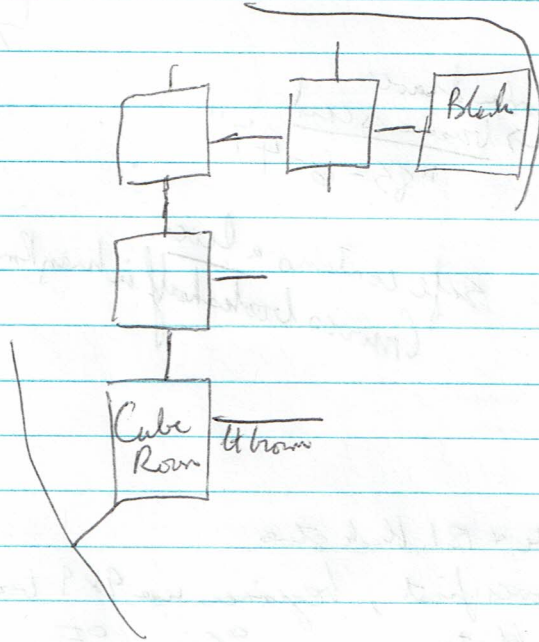
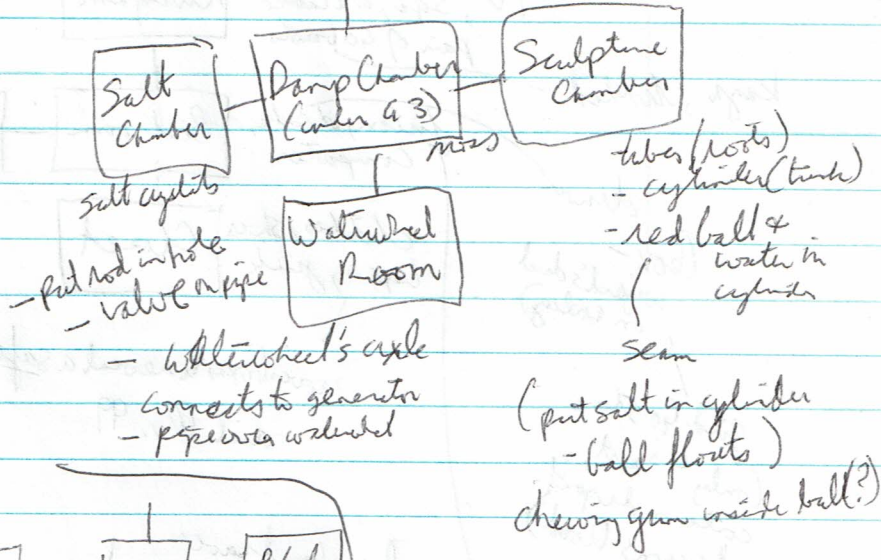


ding: Electricity on / check fuse / blower on / crucible shut.

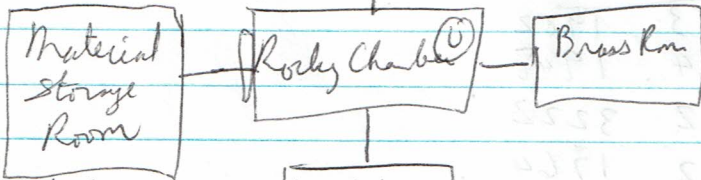
eg PUT WHITE STONE ON ES
GET ES
RESET BOARD



black cube (or malle)



block of malle
4" square white cube

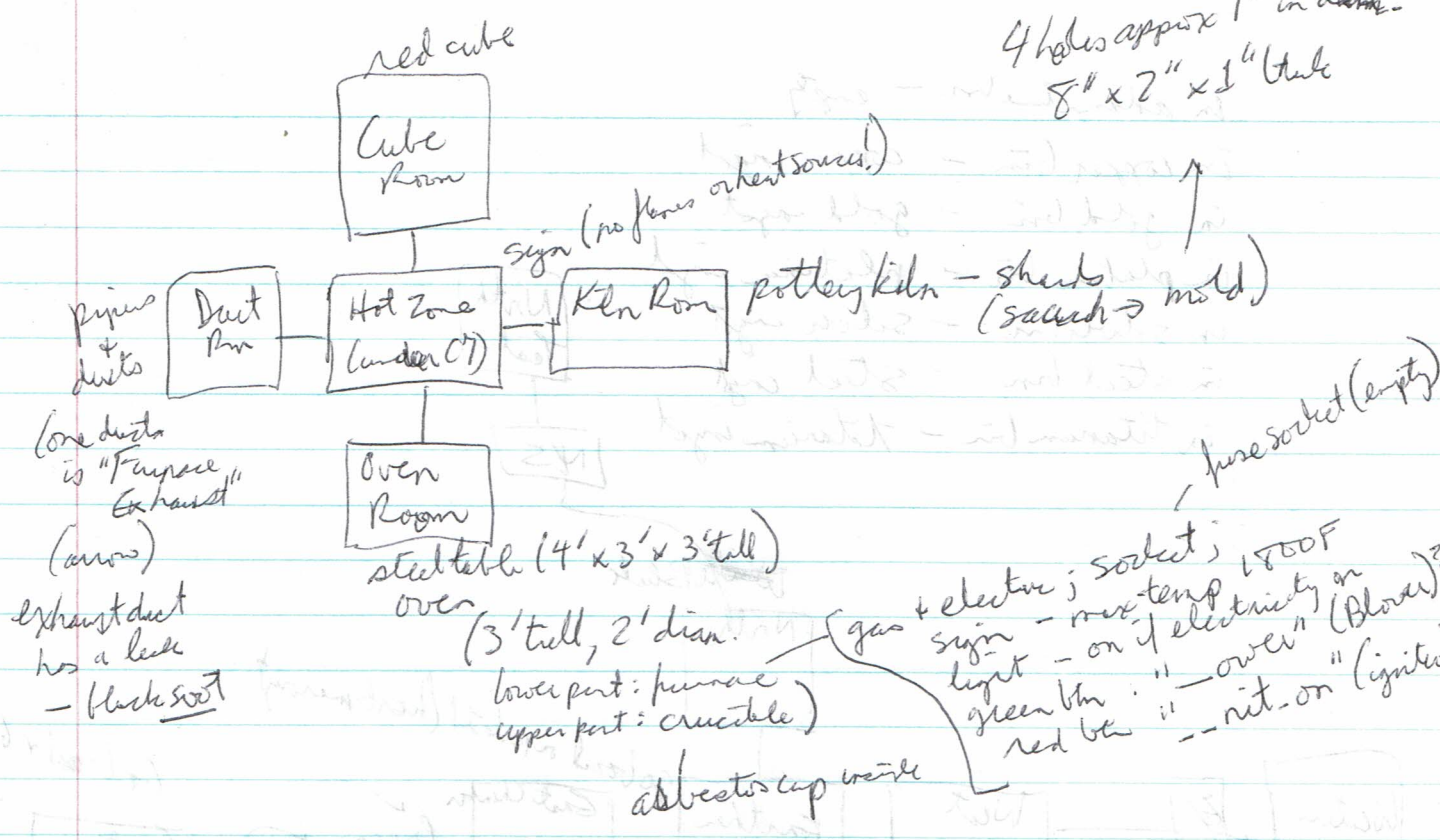


- bins
- adamantine
- copper
- gold
- platinum
- silver
- stainless steel
- titanium

workbench
- steel rod

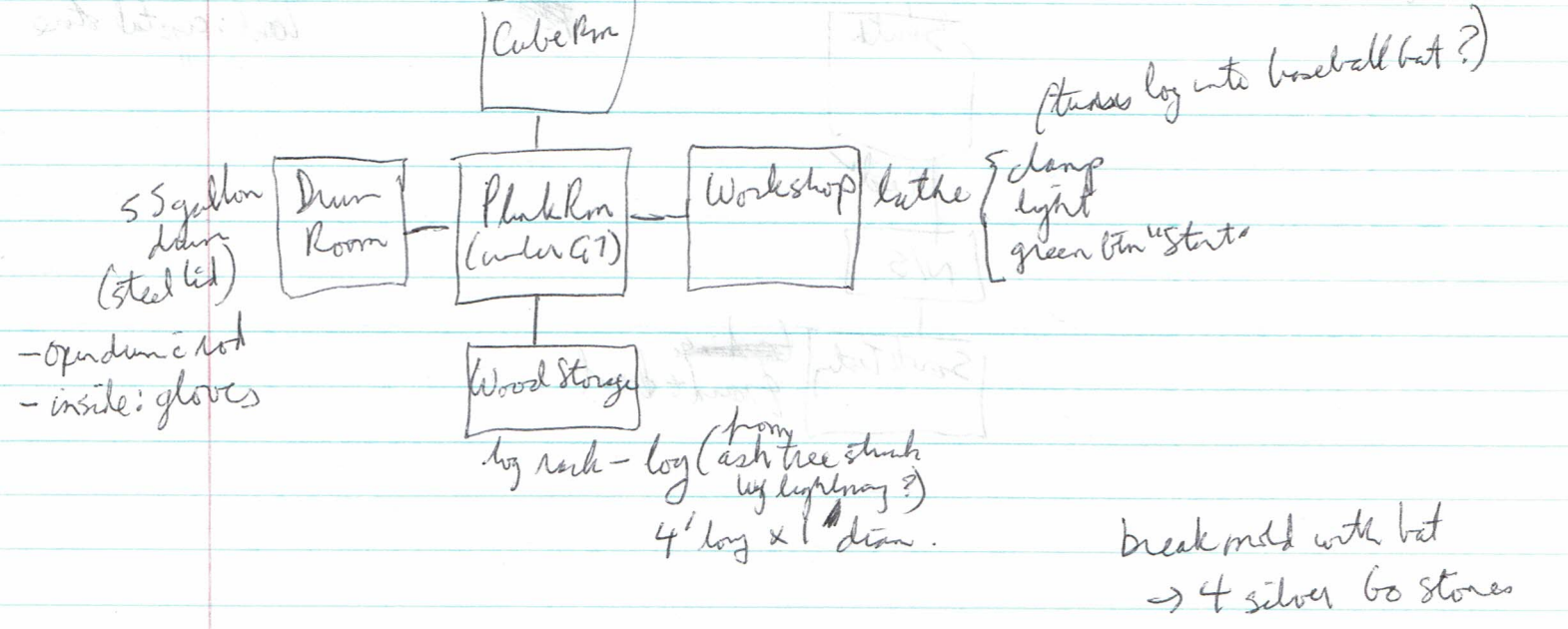
iron stand,
brass sphere glass
- smudge on plate
(put soot on smudge → frogprint!)
thin touch plate
→ opens W of Rocky Chamber

4 holes approx 1" in diam -
8" x 2" x 1" (hole)



one duct is "Furnace Exhaust" (arrow)
exhaust duct has a leak - black soot

green cube

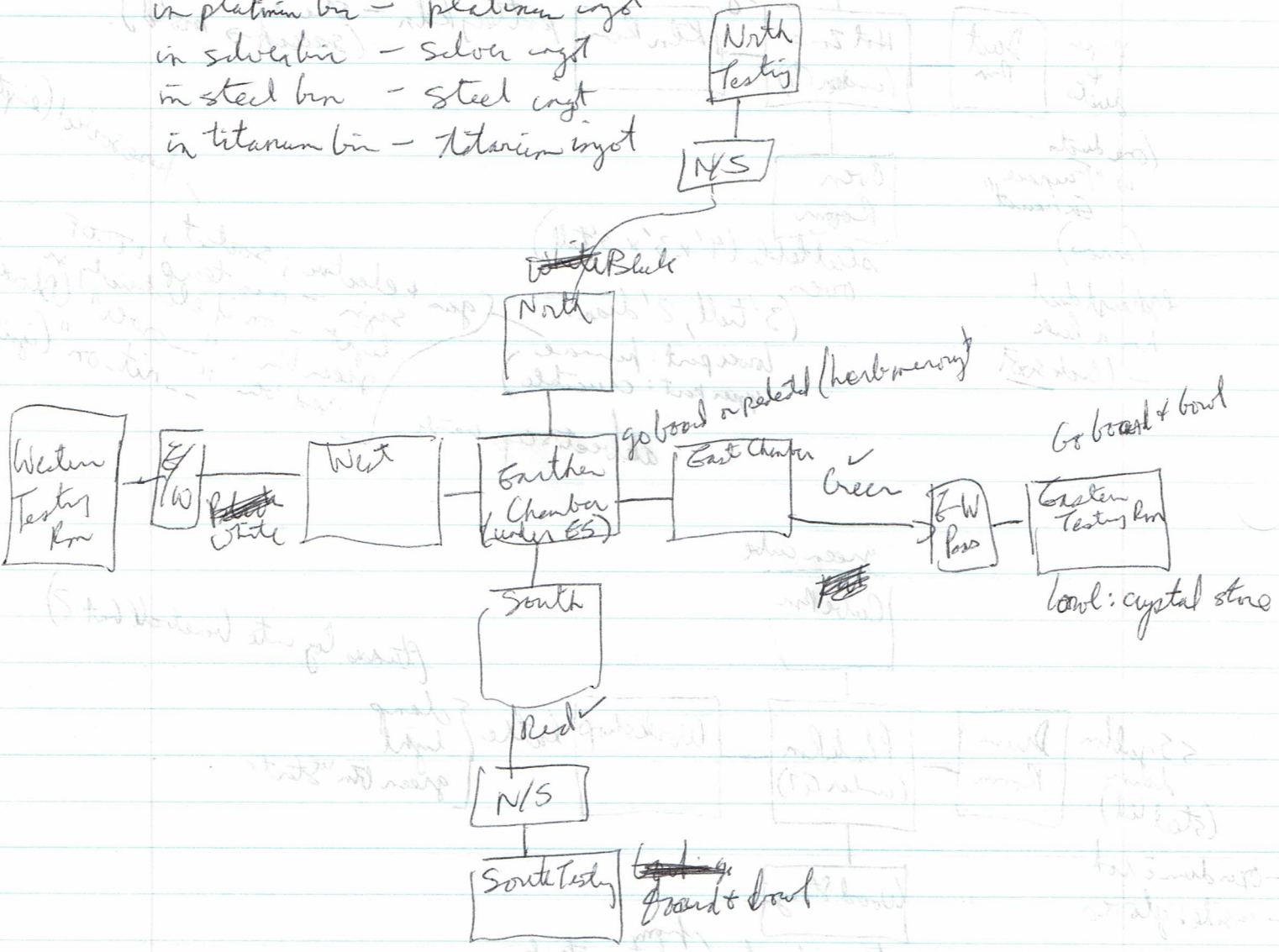


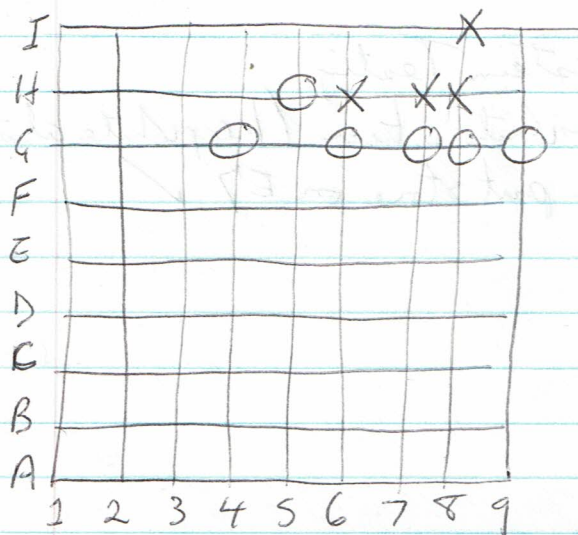
- Opndrum c not
- inside: gloves

(thunder log into baseball bat?)

break mold with bat
-> 4 silver 60 stones

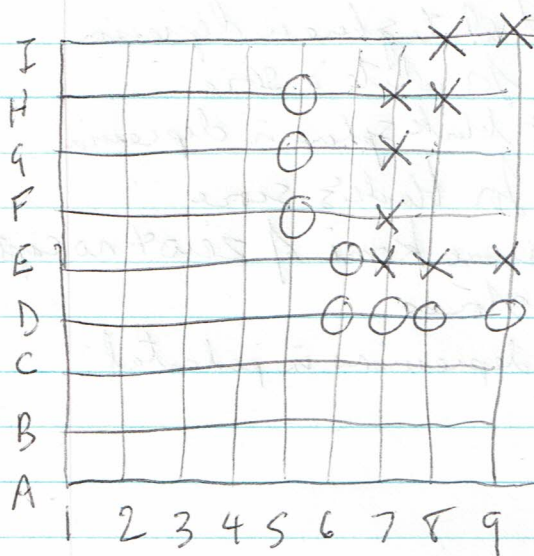
- in admirator bin - empty
- in copper bin - copper ingot
- in gold bin - gold ingot
- in platinum bin - platinum ingot
- in silver bin - silver ingot
- in steel bin - steel ingot
- in titanium bin - titanium ingot





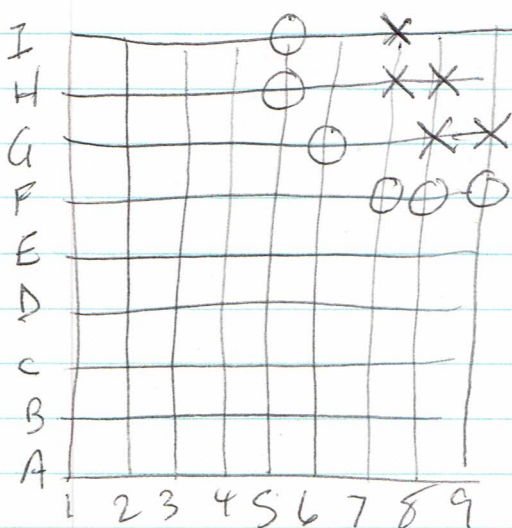
Eastern Testing Room

- white's turn to play (kill block)
- X = black; ○ = white
- put stone on I6 ✓



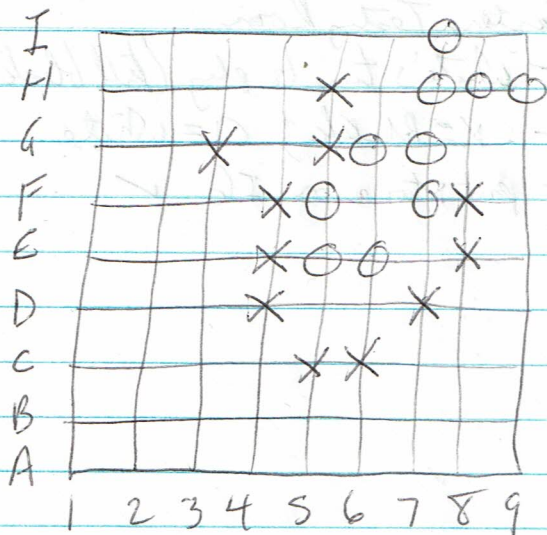
Southern Testing Room

- white's turn (kill black)
- put stone on G9 ✓



Northern Testing Room

- black's turn to play (keep black alive)
- put stone on I9 ✓

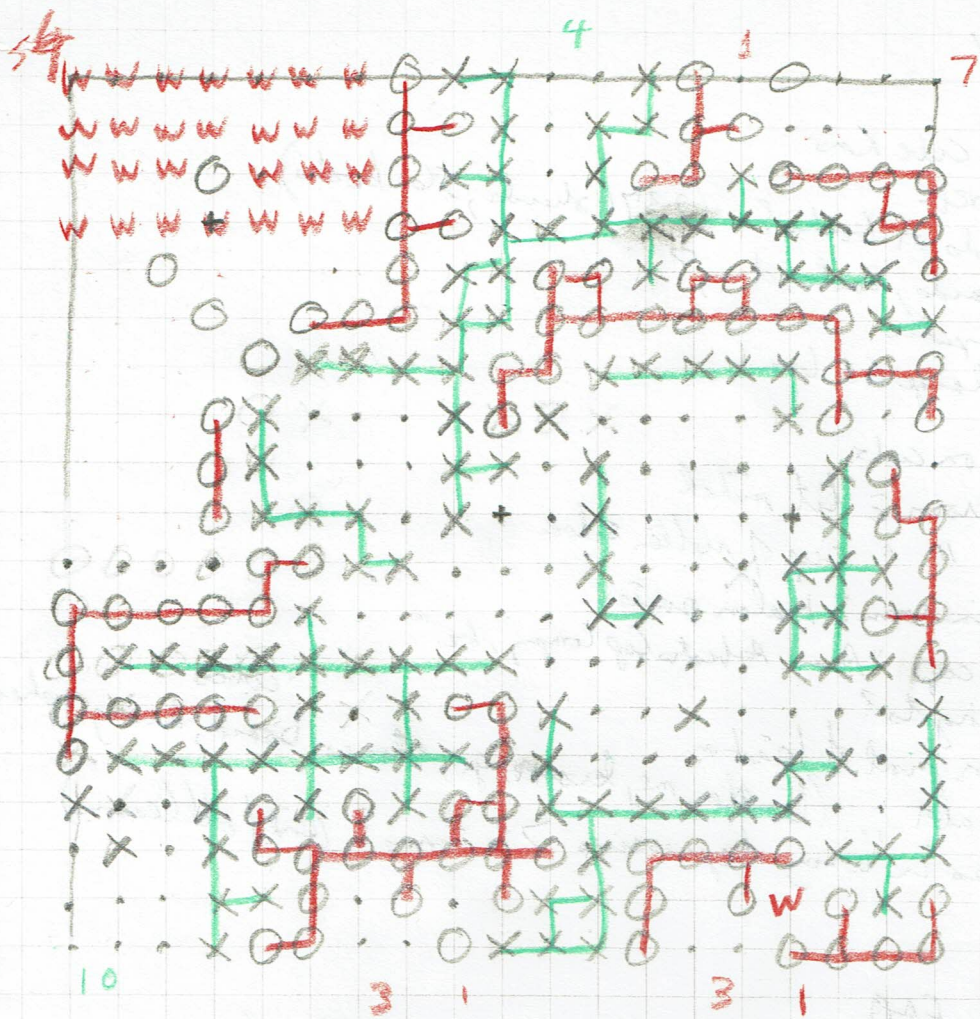


Western Testing

- white's turn (keep white alive)
- put stone on E7 ✓

Center Test

- put white sphere in depression for white's score
- put black sphere in depression for black's score
- assume komi of zero & no captured stones
- 100 depressions in pedestal



- dead stones captured & removed from board
- get 1 pt for each stone captured
- + 1 pt for empty territory (surround by 1 color)

[color]
pt sphere in [#]

Black 67, white 68 is wrong.

set: 180 white, 181 black
on board: 103 white, 118 black

Black	White
4	54
53	10
10	8
<u>67</u>	<u>68</u>
68	72

118
103
68
68
357
2

19
19
171
18
361

- 2 - red basket
- 2 - red basket
- 2 - zenlock safe
- 2 - capture black
- 2 - piece
- 2 - open valve
- 2 - get red ball

- 2 - make hat
- 2 - open door
- 2 - make 4 set of
- 2 - North
- 1 - South
- 2 - East
- 1 - West
- 2 - find 60

amusing

- ✓ watch TV
- ✓ listen
- ✓ drop obj in cube box
- ✓ XYZZY, ZORZ
- ✓ count shards or books? (2371 shards, 561 books)
- ✓ burning boards, bowls, diary?
- ✓ play on computer
- ✓ look under large 60 board
- ✓ hit cubes
- ✓ turn lithe on cube
- ✓ have open room = lit match
- ✓ " " " " cup of molten silica
- light match in room = Halon poster
- ✓ look under cup "Acme Asbestos Cup Company, Inc."
- ✓ melt other ingots?
- ✓ burn diary in front of teacher
- ✓ ask teacher abt "..." (teacher, me, kersore, go, stones, board, diary, spheres)
- ✓ put spheres in wrong depressions 73 times? (end of all lessons)

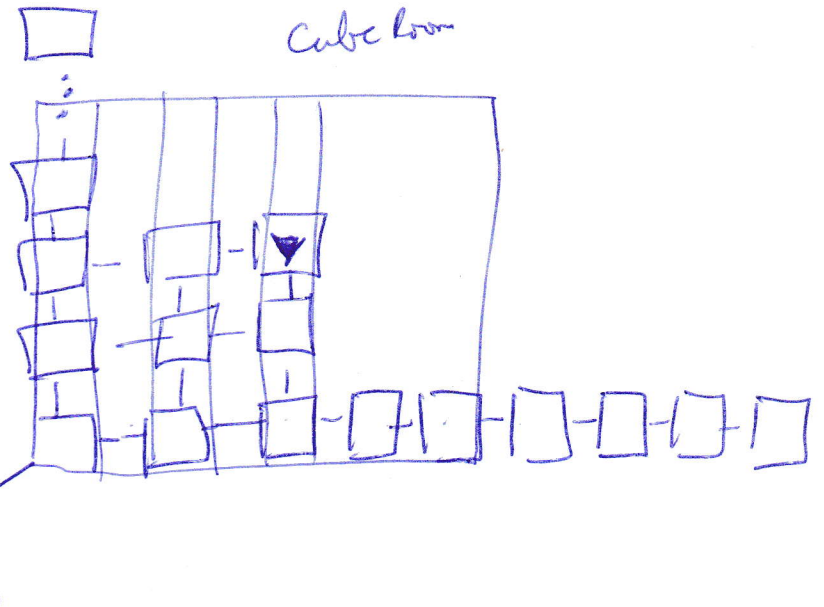
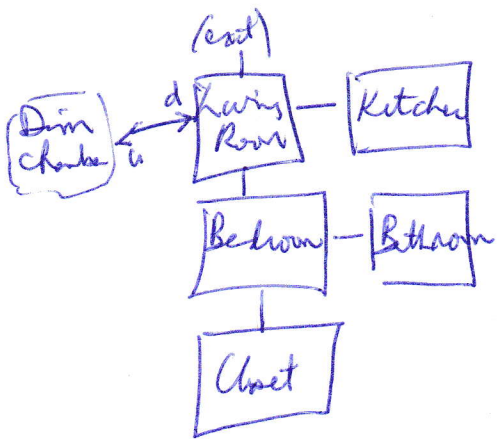
- Vertigo FAQ
- <http://www.idyllmontn.com/rac/dc/vertigo/>
- Play Murder of the Moonlight (TADS)

White
#2
#101
#11
#14
#17
#19
#21
#23
#25
#27
#29
#31
#33
#35
#37
#39
#41
#43
#45
#47
#49
#51
#53
#55
#57
#59
#61
#63
#65
#67
#69
#71
#73
#75
#77
#79
#81
#83
#85
#87
#89
#91
#93
#95
#97
#99

Black
#1
#2
#3
#4
#5
#6
#7
#8
#9
#10
#11
#12
#13
#14
#15
#16
#17
#18
#19
#20
#21
#22
#23
#24
#25
#26
#27
#28
#29
#30
#31
#32
#33
#34
#35
#36
#37
#38
#39
#40
#41
#42
#43
#44
#45
#46
#47
#48
#49
#50
#51
#52
#53
#54
#55
#56
#57
#58
#59
#60
#61
#62
#63
#64
#65
#66
#67
#68
#69
#70
#71
#72
#73
#74
#75
#76
#77
#78
#79
#80
#81
#82
#83
#84
#85
#86
#87
#88
#89
#90
#91
#92
#93
#94
#95
#96
#97
#98
#99

Red
#1
#2
#3
#4
#5
#6
#7
#8
#9
#10
#11
#12
#13
#14
#15
#16
#17
#18
#19
#20
#21
#22
#23
#24
#25
#26
#27
#28
#29
#30
#31
#32
#33
#34
#35
#36
#37
#38
#39
#40
#41
#42
#43
#44
#45
#46
#47
#48
#49
#50
#51
#52
#53
#54
#55
#56
#57
#58
#59
#60
#61
#62
#63
#64
#65
#66
#67
#68
#69
#70
#71
#72
#73
#74
#75
#76
#77
#78
#79
#80
#81
#82
#83
#84
#85
#86
#87
#88
#89
#90
#91
#92
#93
#94
#95
#96
#97
#98
#99

Not just A Game



black = water
 red = fire
 green = wood
 white = metal

