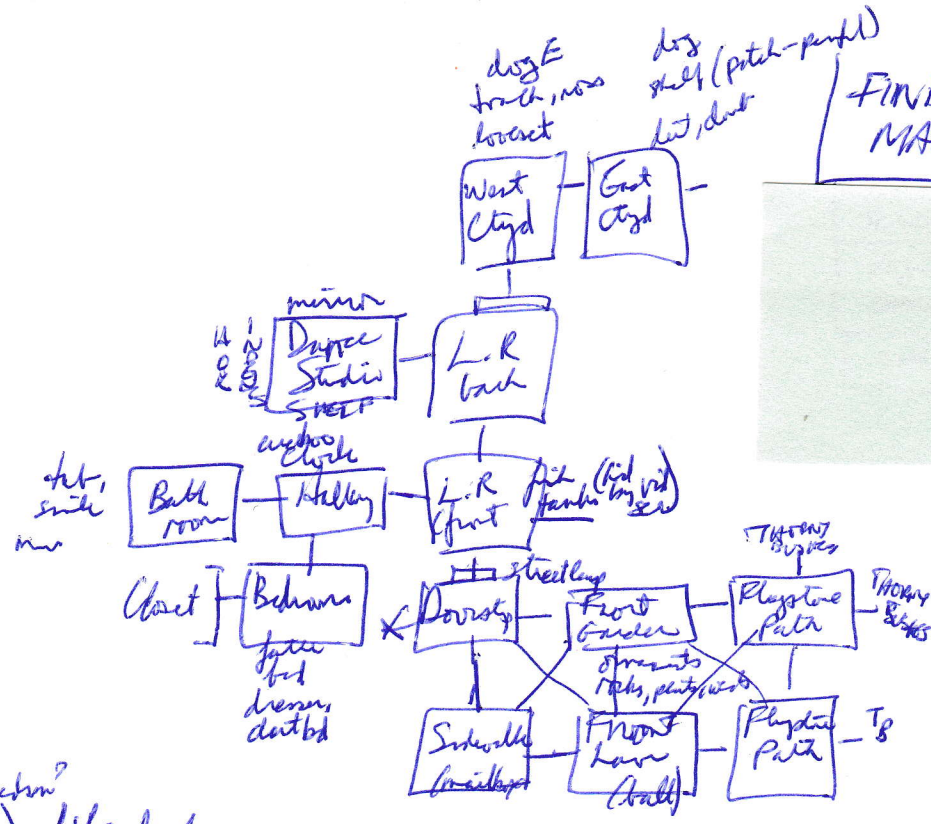


FINNING MARTIN



Rehinds (place)
Bell (speaker system)

Golden -
Franklin - video screen in bedroom
turn stem (up down) - fluorescent glow.
Emsler (+2 hrs, stem) (at 4 - suggests party, it is pulled)
Maxwell (+4 min)
Hesseler 4:54, 4:18, 4:34, 4:03 (random min?)
Fib (minutes)
Aro (movies - screen)
Newton (Wes 3:00)

metaphor Asst Hithce
& (Sdykade)

penguins ornaments (Huey, Dewey, Louie, Stewie, Chuck)
mailbox as windmill (turn blades -> open! envelope + slack (the pill))

LR - well south, window i curtains, stuff of trunk, sofa, rug, video screen, rug (big) rollable.

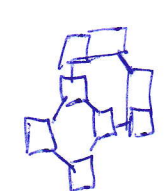
hook (shy, undentins)
open Bedins - sheet music grabbed by ferret (Stuby)

LR (back) another, pit door + glass, trunk, piano, bust, back, bookshelves, desk (computer), chair. exit from

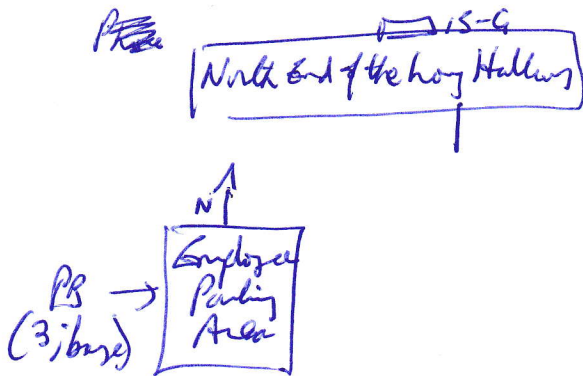
- hallway
Bench for chair rest rest
① nose (1/4)
② ear (1/4)
④ chin
piano (music stand)
cupboard (antennas)
Boothone : Do (Dad)

TWEEGLE DEE
BASHFUL
ATHUS
SATURN
BLITZEN
dance - jazz, tap, ballet, modern, ballroom.
Water music - fills/empties tub.

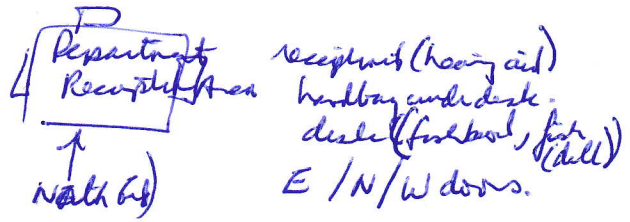
bed. white sock.
fitch (blue sock) (black) (black) behind
-> bookcase.



see also
Piper of Mars



#



Coffee Room

- mug, pot, memo, door.
- memo (all employees are prohibited renovations)

Research Lab

- Ben - wire stripper
- Ken - soldering iron
- Glen - small Philips screwdriver
- Sven - long-nosed pliers
- Jen - alien wrench
- Bunsen burner (off)
- lab coat (lab coat)
- safety goggles (safety goggles)
- goggles (shot for filter?)

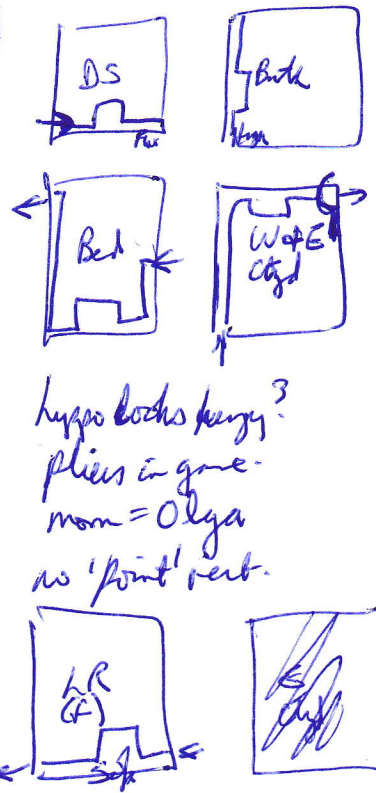
- coffee pot / room N,
- special mug for oven.
- implement oven from 7.
- rec. is Mrs. McWhitterty.
- Mr. Pendergast
- Mrs G is fired; she buys coffee.
- coffee room open.
- forced back to Empl Parking Area.
- special coffee filters made from eggshells

Phone 9 to be returned (no 4 or 7)

- "8" - pinson jellyfish sting (if no vinegar) - don't touch with bare fingers.
- "1" - turn on light!
- x twice "Kessler-Takamine Drive" (rest in Japanese)
- "2" - gives you a butterfly. (concern about)
- "3" - shower! hair crackles in static.
- "5" - \$50 bill.
- "6" - 13 metaphors to change an inspirational quote into a flight lab job. (all to the grille)

- check shelf in Dance Studio
- ply with darts
- map where train goes; maybe we can move it one rm at a time?
- do a 'fetch' map with Spontacous?
- what noises does Beethoven make? Does he turn?

- orange walls
 - round device on back of pillar (axis of a camera?)
 - round metal depression socket in center of square glass shelf (checkerboard)



hypo books pengy?
 plics in game -
 mom = Olga
 no 'point' verb.

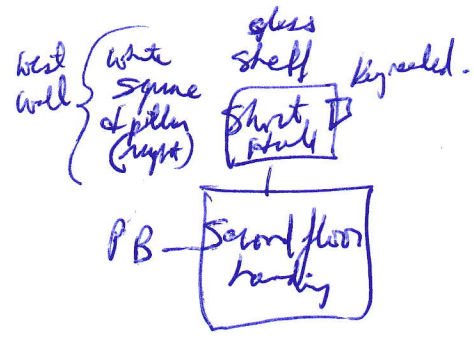
Sketch noise at Bathroom (needs assistant)
 - (yellow rubber duckie)
 fetch/show map → nil
 - no screen in Bathroom
 fetch (bell) → nil
 fetch (stopper) → nil
 fetch (feather) → yellow dirt
 (darts are R, Y, G)
 fetch (y dirt) → ceiling
 red dirt on 2nd jump
 yellow (clinking) red (rattling)
 fetch (man) → bench

whistle device to open door from inside
 go through left/right door.

address 28467 (invoked)
 77567 (invoked)

*27398

1 enlightened	6 inspired
2 covered	7 moved
3 cleaned	8 informed
4 uplifted	9 transmigrated
5 enriched	



- 7 (moved) (needed object)
- 1 - Zoo
 - 2 bench
 - 3 - work
 - 4 - store
 - 5 - vet's office
 - 6 - Mom
 - other - main room.

	Sun	Moon	Mercury	Venus	Earth	Mars	Jupiter
element	gold	silver	mercury	copper	lead	iron	tin
color	gold	silver	yellow	green	black	red	blue
at NT	79	47	80	29	82	26	50

Hc C
 2 6 5

color code bk G S R Y B G BK
 82 79 47 26 80 50 29 82 ← this worked!

log white (Zen monastery islands sig in flows)
 - (Buddha retreat? Mu?)

- 10:28 - 17% of accidents are bicyclists
- 10:32 - Cats have music preferences
- 10:36 - Martha Stewart (place settings)
- 10:40 - Hippos & alligators (bed on the hippo)
- 10:44 - Smells can trigger memories
- 10:48 - w/ a glass rod & use it to pick up a sock
- 10:52 - Some people find broccoli to be bitter
- 10:56 - Jones's "Rhinos" (theatre documentary on abstract)
- 11:04 - Back to the Future (88 mph in DeLorean)
- 11:08 - Star Wars (can't eat)
- 11:12 - Fellowship of the Ring ("dellon")
- 11:18 - Witness (John Book hiding in forest @ Amst; very plain)
- 11:20 - Jaws
- 11:24 - Star Trek II (Wales)
- 11:28 - Indiana Jones
- 11:32 - Jurassic Park (in the tree)
- 11:36 - Beostmaster (2 ferrets chub out of a backpack)
- 11:40 - Superman (Kept uses phone booth to charge)
- 11:44 - Time After Time (HG Wells claims to be Holmes)
- 11:48 - E.T. (phone home)

- ✓ 11:32 (2001: A Space Odyssey) Dave transformed the light patterns
- 11:56 (Terminator 2) machines from future
- 12:04 Casablanca "Play It Sam"
- 12:08 Ben Hur (chariot race)
- 12:12 The best Dictator (Hatter tosses globe)
- 12:16 Laura (detective loves woman in party)
- 12:20 Arsenic and Old Lace (blow "Chastise" on bicycle)
- 12:24 Tanzania (singing on vine)
- 12:28 Three Musketeers
- 12:32 Desk Set (runs 7 drawers)
- 12:36 Miracle on 34th Street (boys of mail)
- 12:40 Time Machine (fashions of yore)
- 12:44 Someone to Watch Over Me (dancing)
- 12:48 King Kong (scream)
- 12:52 Journey to the Center of the Earth (volcano)
- 12:56 Spartacus (leads rebellion vs Rome) chin
- 1:00 Aya Noon. "Do Not Forsake Me, Oh My Darling"
- 2:04 Anytime. (blowing bag tube)
- 2:08 Caddyshack (beer in golf bag)
- 2:12 Bull & Tack (travel through time as a blue bath) "Party On"
- 2:16 Noses Off (joke)
- 2:20 Groundhog Day (washes up at bar over & over)
- 2:24 The President's Analyst (kidnapped by Phoebe Co.)
- 2:28 Tootsie
- 2:32 The Odd Couple (Harrow poster)
- 2:36 Turner & Hooch (lady vet, wipe drool from dog)
- 2:40 Bird Cage
- 2:44 Animal House (To-go!)
- 2:48 Pink Panther (squishy shoes)
- 2:52 The Gods Must Be Crazy.
- 2:56 Monty Python & the Holy Grail (coconuts)

e [Vet's office] ^{Dr} Julie Takami, D.V.M.
 e [Waiting Rm] people, desk, lady, cat, man + paint, by + noise + headgear
 women + rock, Mrs G + fishbowl, window E.

- fish will gouge, cut right + find soul mate
 - fish inside the headphones!
 e [Vet's office] koi needs spec flowers to eat (purple flower) near Bora Bora
 - taken from Mrs G (for park)

ADRIFF	5
Alan	4
Glady	1
Hugo	1
TADS 2	2
TADS 3	3
2-wo	22
Other	9
<u>Total</u>	<u>44</u>

D → W (eye out)
 (fake ear) W → N

15	13	9	5	96	5	199	39	381
5	1	1	1	2	3	22	9	44
<u>20</u>	<u>14</u>	<u>10</u>	<u>6</u>	<u>98</u>	<u>8</u>	<u>221</u>	<u>48</u>	<u>425</u>

Mikado cat in chryd,
 stuss at mesa, listen
 sensory enhancement devices
 Julie understands (pushy water)
 Chant get V to hear M's voice?

Shuffle Off To Buffalo (Fly, shuf, hop)
 true step (stf, hp, step, Fly, step)

Eljindo <sup>(Largest
 events +
 from Rel)</sup>
 → Cheryl Howard
 re: gillet
 → James Webb

if you can't move
 a chair, fold a desk chair.
 under step (2nd leg)
 lower basket, show stone at basket.
 raise basket. take recorder.
 X cassette (To DAD);

Yasmira's Aunt

- 1) work
- 2) vet
- 3) zoo
- 4) mom
- 5) store

try copper by at 2nd floor?

Alfred
 - just a Koko
 - milk

1:40
 1:41
 1:36
~~1:36~~ group

- 7:24 - 2nd time for rabbit.
 - Charlotte's web (web has words on it)
 - now the web says "Some Elephant"

by shortest card Wandita → dove i Dolly hevi
 step, flap, hop, shuffle,
 Shuffle Off To Buffalo (flap, shuffle, hop)
 Time Step (shuffle, hop, step, flap, step)
 practice backwards and forwards.
 - red feather bag (she takes her card)
 (bag vanishes)

- wear gloves (with goggles)
 follow the yellow birds and
 north wall.

S → [Tunnel (south end)] N → [Tunnel (north end)] push trap door. U →
 blue stairs blue stairs

[Cage] yellow back road, red door N flowers, soil, greenery.
 look (basket, part of gardenia) N, S, E, W, W fountain, rose detch, trap door slams shut.
 roses x flowers (roses, daisies, ~~no yellow~~ blue wavy glories, pink tulips,
 - pink rose) white chrysanthemums, orange snapdragons.

[near west end] fountain, (winged buffalo, wings point down, water sprouts from edge of wings)
 pit niched in fountain → trap door opens. (wings rise)

[near north wall] unlock red door (without goggles)
 N [Stone Path (by the red door)] those bushes.

3rd (follow) → N to aspen grove, S thru thorny bushes.

black trunk { top hat, fan, copper key } fan-japanese money.

x fan (open) reflection of sun on water. turn fan over (moon + stars)
 x copper key (small, filing cabinet or padlock) / the peygin - is the alternate
 - 200' tower.

	eye	ear	nose	mouth	hands
the	red flash	lip white	channel No 5	sweet	smacks opposite spin
was	blue flash	low buzz	soft	sour	same spin

Wiggle ears - notes
 no flowers in the vase
 & signs.
 Small rose
 - need money adjacent

put rose in vase (rose moves to gold circle) wiggle ears: "4"

fake pot (from basket) . x pot (design in bk, y, tny, wh + red; abstract, see Amer.)
 basket - narrow strip is doubled.



rose - "1"	two
tulip - "top gold egg"	top moon
daisy - Sunday	Munday
snail - Helios	huna
chrys - "Sun"	"moon"
glory - aurum	argentum

daisy
glory
tulip
rose

Beckward Two Step (9 in Janes)

wave fan @ Gazabo. / whistle, play song (Raina has a native Amer heritage)

- V. teachy at Syracuse Creek Boys Academy (bky)
- sofa is a dream couch.
- Dance Studio was a laboratory?
- Sacred mushrooms? (we by organic broccoli)
- mating conceived
- wish (most an opportunity to contact something important)

Julie Takehome (12 or 13 y.o.)

V in gone, mask in morning.

- 2 fanets, mixing cassette was blue or yellow, taken by Rachel

ply "home on the range"

fan shapes open @ Bathroom.

- V - sing to cut (shampenes class on back)
- wants something in bedroom, French or Italian.

Sing "O Sole mio"

Study of Twinkie (white) - squaky!
 (br etc) - attached the cut!

do re mi - falls to ground
 wiggle ears - @ pins (I don't do those kind of jokes)

- 11:11 Seven Per Cent Solution (sours water)
- 10:23 Iron Chef (truffles) } Arayahu
- 6:02 Singing in the Rain (movie) }

gold, red, green, blue, silver, black
 blackboard

clap (hands)
 song "mi"
 song (piano) (watch beeps used)
 - @ 1:09 - water

Arayahu
 Arayahu
 10:23
 6:02

Sweep fingers is a
 short form for
 Abraham Water
 to deliver food.

fungus don't like bread (sourd)
 " work

- 11:01 - Wizard of Oz (green pills)
- 10:01, 10:02 = ~~one~~ A Brief History of Time
- 03
- 04 magnetron (for communications just)
- 05, 06, 07
- 08 (Junkyard Wars (published from lawn mower parts))
- 11

"My Very Excellent Mother Just Served Us Nine Pizzas"

12 - office efficiency: Provide power source, days of percent.
 15
 16 - Iron Chef (truffles)
 20 - alchemy

	Sun	Mon	Mercury	Venus	Earth	Mars	Jupiter
element	gold	silver	mercury	copper	lead	iron	tin
#	1	2	4			3	5
			with lead spirit	29 brackets		3 thinner	

Dmitri
 Mendeleev's
 Periodic Table

(79) 29 50
 W Cu Sn (Tin)

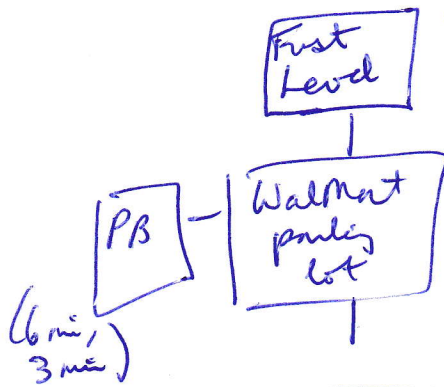
26 80 47
 Fe Hg Ag (Silver)

79 (11) 82
 Au (Na) kept Pb

Sun mercury (Na Tr) Iron Copper Tin (both) Lead

Gold 1
 Au, Hg, Na, Fe, Cu, Sn, Ag, Pb
 79, 80, 11, 74, 26, 29, 50, 79, 82

Au Ag Hg Cu Pb Fe Sn
 79 47 80 29 82 26 50



cobblestone floor, amulets in city.
 Statue of king, street table & large book.
 2 food dog statues

Takenies benevolent
 cars (Rambler, - meow in car (cat?)
 Caliber) (cat + turtles
 people (Aussie)

(E dog - open mouth
 W dog - closed mouth
 puts mouth in E dog,
 change from W dog.
 "me" sound.

long book - open.
 First level: Cystals, Stones, Souvenirs.
 turn page

Second level: Garden and Pond Supplies.

Third: Candles and Incense.

4th: Kawasaki Maintenance

5th: Organic Vegetables

(back to 1st)

Warrior King: bow, arrow, sword, throne.

- Chase book. take pebble, put pebble in industrial.

e → [Second level] cabinet N, turtle cage S,
 & washbasin. Shelves W

rakes, soil, deodorizer, fish food,
 used wood, hedge trimmer.

cabinet closed. (part of King. are foot anchor serpent + turtle
 stem from cabinet: bowl of rice particles.

(i spoon) washbasin (water, slightly dirty, for washing)
 turtle cage high as yr knees.

fish food (\$\$). rook (Dog's Atoms - Sakyo - Thanks for all the fish) \$5
 trimmer have cost (\$30) spoon (just a spoon)

wash bowl in basin (opening above search table).

get on turtle → [Third level]

[Third level] shelves (wreath,
 candles (green, ivory, red),
 above (statue of king)
 box of rice ash W wall.
 S (hole with ceiling of search table.)

green candle (\$5, pine smell)
 ivory (\$5, vanilla scent)
 red (\$5, cinnamon)
 King (copper, bow, breastplate & bird
 enchan. quiver (empty))

box (base for making woodchip incense.
 - from Phoenix, AZ.

Search ash - arrow!

put arrow in quiver
 (statue shoots arrow, tip flames,
 4 pounds in west wall, wax in bowl,
 red bird flies out of box,
 red tail in a rope ladder up!

[Fourth level] bike shop. work table (parts + tools), sign, painting east wall.

cooking: king in chariot blowing demons & mouth.

x painting (cat bark? dog whistle? buffalo moo? one hand chipping? answer blowing in the wind?
 frozen knot, talking dog, how well victoriously after they walk into a bar?)

Sung next painting. elephants → (pound N, J. K. L. W. T. R.) wiggly ears → (your magnets - could be help)

- ✓
- Zleovtr
 □ brown rect
 ○ silver circle
 △ red triangle
 ~~~~~ way blue  
 □ yellow square.

push rectangles  
 → [5th level]

~~panels~~ panels (cabbage, broccoli, unmarked)  
 no king?  
 cabbage (closed, 85 each)  
 broccoli (closed, look, pile crossed, hole near bottom, need assistance for hole)  
 open unmarked (nothing)  
 enter unmarked → in existence disappeared.

→ [Japanese Garden Entrance] gate to store S,  
 path way NE.

NZ → [Store Step] tea house N, wooden step, paper chair.

remove shoes → [Tea House] table.

records & box of cassettes (play tape recorder)

play tape (in Mother's father's voice for project)

Dad sent signals to star systems. M's friend & partner  
 Jojiro Takamine developed device to send brain waves  
 light yrs thru outer space. 25 yr old tapes.

Transm 25.7 lt gray. Viktor was very fast on milk,  
 looking to Hamlet & Beethoven's 5th, smells of flowers,  
 red taste. Cat Pagnini wired on fabric samples.

Reply! Instructions, mostly mathematical, each of V & J received  
 part of the msg, also how to enhance transmitter for RTL.  
 needed unusually strong taste (sweet son, salty or bitter).

Broccoli for bitter (J wanted medium size broccoli, V large,  
 Pag ate most of it)

S to Walnut (rain condition dropped)

- Chin - Bo-rr-rr-p  
 nose - Beep!  
 forehead - Ree-rr-rr-rr!  
 ears - Hoop!

put white pawn on glass shelf → iris opens, cylinder opens + enters socket.

fuzzy square rotates 1/4 turn ↻ x 3

square is one side of a fuzzy cube. ↻ ↻ ↻ 2 1/4 (hole in fuzzy chamber)

w [Fuzzy Chamber] N: 3; W: 6; S: 4; D: 2; U: 5

take em tile (2) (hole is now west)

w [Rachel's Bedroom] mural, birdcage, table, dresser, flower vase,

~~em~~ glass shelf, E wall fuzzy, sketchbook on shelf.

x mural: 5 socks around gettin' eggs, Mary jumping in back special (extra rider),

jester, blacksmith, woman/goddess, twin boys.

Tin man, balloons, 7 planets (incl sun + moon)

x birdcage (open, "Dmitri")

x table

|    |    |    |
|----|----|----|
| 74 | 29 | 50 |
| 26 | 80 | 47 |
| 79 | 11 | 82 |

light up !!

stuck  
 80 (80 on, 11 dk)  
 29 (29 on 80 dk)  
 79 (79 on 29 dk)

Sketchbook must be open to 1st page to activate glass shelf!

x shelf (etch fireplace)

x sketchbook (1st page: camp fire at night, celebration of fire, M's dad)

take sketchbook (fuzzy chamber turns)

turn page sketchbook. x.d. (clockwise of woman during (Mural)

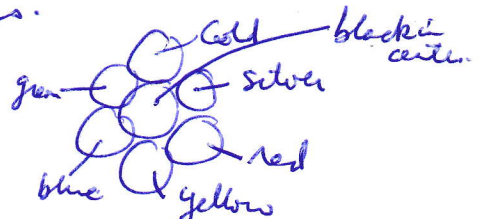
angle of perceptae is off center + backwards)

x (sketch) page (black, details of mermaid on overhanging in tiger-striped kitten.

x vase (on one of 9 circles) on dresser. No flowers.

x dresser (6 circles in a loop, 7th in center)

vase on black circle;  
strong magnetic field holds it in place.



(order of colors in mural: gold, red, green, copper, blue, silver, black?)

(S: 3 B: 6: N: 4: D: 2: U: 5, rest W)

(11, 26, 29, 47, 50, ~~80, 79~~, 74, 79)  
80, 82

|           |           |           |           |           |
|-----------|-----------|-----------|-----------|-----------|
| 74        | 26        | 79        | 74        | 29        |
| 29        | 80        | 11        | 26        | 80        |
| <u>50</u> | <u>47</u> | <u>82</u> | <u>79</u> | <u>11</u> |
| 153       | 153       | 172       | 179       | 130       |

2, 3, 4, 5, 1

rehydrate



Patch (robe) = nil  
 (spun key) = nil  
 (nickel) = nil  
 (puck) = nil  
 white shoes = nil

9:30 - train has  
 10:30 - 17% of accidents are bagel related  
 11:30 - "Indiana Jones" (and to some wretches)  
 12:30 - "Three Musketeers" (Athos, Porthos, Aramis)  
 1:30 - large square - thick black border.  
 tray = plate of hash browns, fork, napkin  
 below square - blue bowl of tossed salad

1:01 - scrambled eggs  
 1:02 - bagel

X salad (beets in it) X fork  
 X tray (resists spilling) X napkin

1:59 - water carry tray  
 put water in pocket  
 (get real tray)

put watch in pocket (mumbling in Black Box)  
 1:45 (root beer)  
 1:15 (pizza)

1:58 - napkin  
 1:57 - knife  
 1:56 - spoon  
 1:55 - fork  
 1:54 - glass  
 1:53 - saucer  
 1:52 - cup  
 1:51 - bowl  
 1:50 - plate  
 1:49 - tray (water)  
 1:48 - coffee

1:48 - coffee  
 1:47 - tomato juice  
 1:46 - orange juice  
 1:44 - lemonade  
 1:43 - plate of cookies  
 1:42 - ice cream  
 1:41 - pineapple  
 upside down cake  
 1:40 - put zels  
 1:39 - bliskoy - dirty dishes  
 1:38 - strawberries  
 1:37 - banana  
 1:36 - 1/2 a grapefruit  
 1:35 - melon cubes  
 1:34 - green beans  
 1:33 - corn  
 1:32 - beets  
 1:31 - coleslaw  
 1:30 - tossed salad

1:29 - water carry tray  
 1:28 - rice  
 1:27 - scalloped potatoes  
 1:26 french fries  
 1:25 mashed potatoes  
 1:24 - salmon  
 1:23 - caltugel rolls  
 1:22 - brisket  
 1:21 - spaghetti  
 1:20 - mentloaf  
 1:19 - baboy  
 1:18 - potato chips  
 1:17 - hot dog  
 1:16 - hamburger  
 1:15 pizza  
 1:14 egg salad sandwich  
 1:13 - tuna sandwich  
 1:12 pottrami sandwich  
 1:11 - chicken soup  
 1:10 - tomato soup  
 1:09 - water & tray  
 1:08 - cereal  
 1:07 - oatmeal  
 1:06 - pancakes  
 1:05 - blueberry napkin  
 1:04 - toast  
 1:03 - hash browns  
 1:02 - bagel

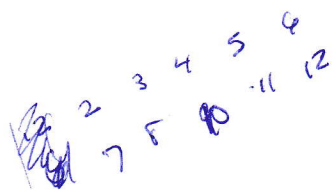
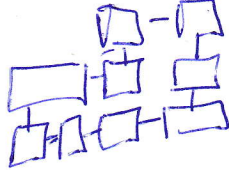
Mr P's coffee = bitter  
 put zels = salty  
 grapefruit = sour  
 cake = sweet

[Tropical Island Beach] palm trees, moon, stars, Clark Kent, coconut.

- remove costume. Give it to Clark.
- W. [East end of Royal Bridge] like, purple flowers, volcano,
- W (forbidden to approach, brought to Great Tiki. (now W of out)
- on Tiki Run, takes headphones, volc rumbles
- one of the volcanoes needed for book to open.
- 2 job in headphones. (we met towers to the Sender,
- must buy from the Forward Booth
- present on ground, private strip (Hook + Peter Pan)
- Tenderbell in Hatch (cooked in bottles)

at  
(one stop found)

- 9:10 Song "Five Hundred Miles" (if you miss the train for us, you will know what a piece)
- 9:20 (not at train) "The Atchafalaya, Topeka, and the Santa Fe" (Do you hear that whistle down below, I need that for the engine #49...)
- 9:30 Ticket to Mike
- 9:30 Whistle blows to N. (9:30 - picks up tray if present) } abstract with the
- 9:40 " " (9:40 - put tray down)
- 9:50 " " (9:50 - reverse direction)
- 9:00 Train goes backwards?
- 9:51 "I Thought About You" (also 9:52, 53, 54, 55, 56, 57, 58, 59)
- 9:15 - heads away (checkbox) by 2) to bathroom? (9:14 (go to bedroom)
- 9:16 - train moves (+1 to Duvet table
- 9:13 - sofa. 9:17 - armchair. 9:12 - sideboard 9:18 - loveseat
- 9:19 - shed? 9:11 - kitchen (partly try down at kitchen platform → seat)
- 9:21 (+1 from sofa, from sideboard to sofa) 9:22 (+2 from sofa to table)
- 9:23 (+3 from table to loveseat) 9:29 (0, loveseat, white) 9:25 ( ; loveseat to armchair)
- 9:31 "The City of New Orleans" (to 9:39) 9:41 (She's got A Ticket to Ride) 9:42, 49)
- get candle in shed, look thru window: bizarre machine; can't walk: lab bench + stool
- lives in center of bench + up. Black done deed. shelves very close to large door.





top drawer = ~~knives~~ + underware  
 middle = shirts  
 bottom = phone books  
 photos - under glass

(2 women Anne & Rachel), Bow of pants, further 2 tricycles + cat's cat, clipping of newspaper during in "42nd st", dig in front lawn & ball

furniture (fresh & salt): fish, starfish, snails, plants, orange sand in salt, yellow sand in pear

x fish. (read boy book to fish)

[Dinning room] (by window table) table, chairs, chandelier, N/S/E, chair cabinet, sideboard, shelf.  
 clock (20 bulbs unlit)



S [sideboard] e [entrance] e [by sideboard] in row.

open drawer (4 forks, knives + spoons)

NW [china cabinet] (4 plates + glasses) (5th floor end)

N → [Kitchen] down & arch E, outlet, Black Box shelf, 2 bowl on floor, video screen N, sink W, pantry to L of sink, LA, mirror + up of sink. model train above box

box (letters, report card, magnets) SIT, STAY, BEG, LIE DOWN, HZEL, TRACK (A-)

x <sup>happ</sup> ~~regret~~ "Every Body to Kitchen Sink" (sink cabinet doors)

puddy pipes, black top shoes. (scratching in arch)

bowls: white, red (liver) (Both doors W)  
 (small liver)

Avogadro - Iron Chef (10:23) (6:02 = Signy introduction) (12:00 = High Noon)

train (19', 6 cars + red caboose)

(2:00 The Producers)  
 - glass of water

(4 - Rock Around the Clock) (6 - Singing in the Rain)

8 - When the Saints Come Marching In

10 - Brief History of Time

5 - Beethoven's Fifth Symphony

7 - Snow White & the 7 Dwarfs

9 - Train plans to whistle

11 - Wizards of Oz (green cars filled)

1 - Food Librarians Food.

Sink has 2 basins, faucet can be pushed, one stopper (water in basin empty)  
 watch keeps on listing laundry room

Laundry Room (working machine, dryer W. glass shelf (etched) S.

- dryer wants matching socks to open

- etching is empty tub.

- Adhoredes thinks towel is in laundry room

phone booth in pantry

OTL  
 16 8 15 21 20 8 1 22 15 14 7  
 P H O U T H A V O N G  
 B O C H A N D I L A Y  
 2 15 3 8 1 14 4 9 12 1 25  
 RW

81.178.91.0

A B C D E F G H I J K L M N O P Q R S T U V W X Y Z  
 1 2 3 4 5 6 7 8 9 10 11 12 13 14 15 16 17 18 19 20 21 22 23 24 25 26

need full for 3rd level (organic decomposition?)  
9 ~~to~~ <sup>to</sup> ~~objects~~ & protective eyewear (9 to dent)

(5 notes played [Not in the Party Anyore])

store token cost \$50 bill  
zoo token cost magnet  
slipper to man (200 mile trip, 40 min) -> NYC.

[con 0]

- fish make y guilty for having butter?

take tag (Agador-Spartacus)

(char from "The Birdy"?)

- "Circular reasoning is irrational."

type "3.1415926"

17-A visual impairment  
transparent Auto-Lite

filter is in 9-C  
with 80.

[PB] on a city  
subject  
CN

N -> [dpt] Sidewalk betw, Pt E, carriage

W -> door man say Raina Kessler might be in Ctal Pt.

(working on museum of R. Grosse Regus)

E (horse comes over) (homestrip \$10, or two one-way)

whistle for return trip (Ctal Pt (near Chen table) two men, one looks  
- bird takes a white pawn! in tree? pith NE.

re -> [Stage Entrance] stage E, chairs, workers & guests, pith SW..

magnet & report card aren't the vet tokens.

Mrs G. did it, wants a battery for her hearing aid.

- turn off spam filter => package delivered. (K. MalG)

open package (spam, empty box) (another car of spam) "get another" for 3rd.

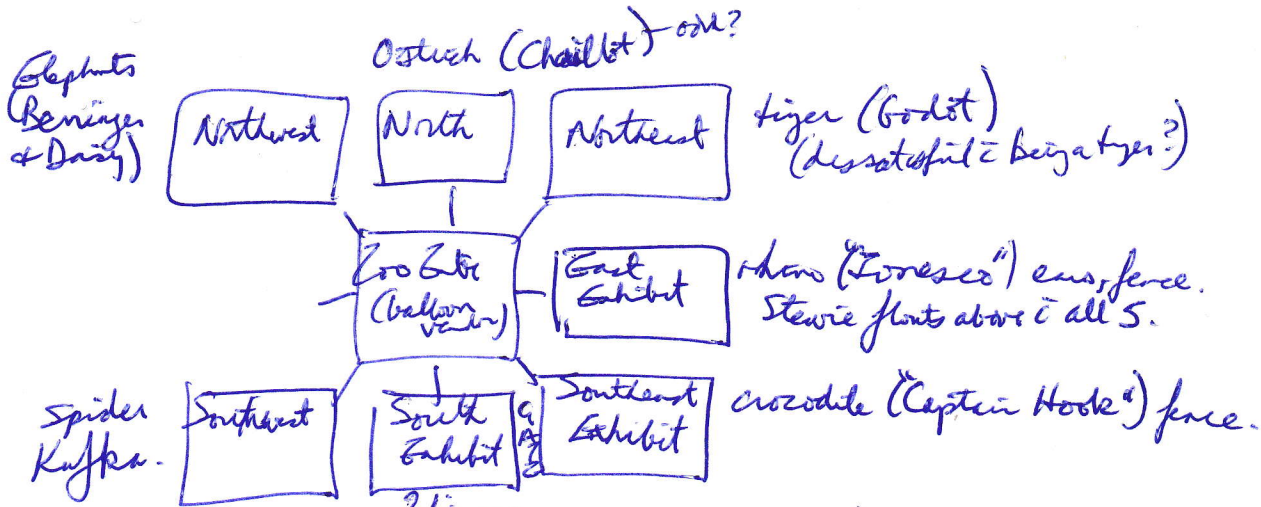
open fake car (plastic). drop car. (goggles grow green?)

knock on east door (5 penguins i shiny something heading for phone booth.

Penguins -> [foo Entrance] (20 mile, 10 min)

Center of zoo is E of Entr. (arty political stat on subj of mineralism.)





- by balloons \$9.95.
- penguin father, penguins go NE.
- rachel (Indian head)

2 hippos  
 (mom: Olga  
 dad: Katerinka)  
 gate + lever (door)  
 pull lever: gate opens.

sing "do"  
 sing "rock around the clock"  
 snap (finger)  
 clap (hands)  
 with black waterproof  
 spelt

wiggle ears → 10" violin appears.

~~copy~~  
 rug → magic carpet?!  
 (crypt use only)

the goggles made the penguins read?

- put X on exhibit?

- rainbow + blk moustak
- phone bth in other dir
- raise feet + grin

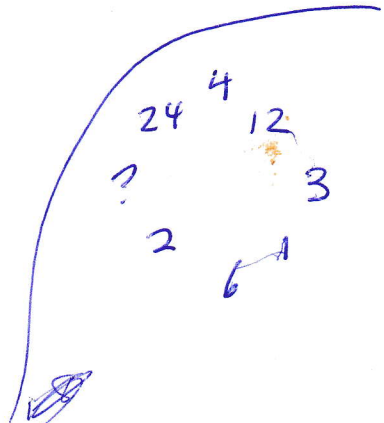
Mrs G will be at vet's & wants Philip screwdriver (givesy father)

- Katerinka
- WPKW on bike

blue jacket + bath robe - KM (backwards)  
 (receipt: tape recorder + 3 anti-cosmetics)

- fetch (receipt) → storage don.
- fetch (jacket) → nil
- fetch (robe) → nil
- fetch (duchie) → nil

wear robe to get duchie from back cabinet. duchie is spongy.



take with tile → (N3 E6 S4 U2 D5 ~~W~~)  
eye → (hole is above you) marble cover, closed.

n → Ballroom

look up @ laundry room (cube + chute (up + exit))  
(not duster, stopper, bottle of hair conditioner)

U3, W6, D4, N2, S5; exit E

eye → hole to hands E3, U6, W4, N2, S5

ear → hole W

noses → hole U

mouth → hole N

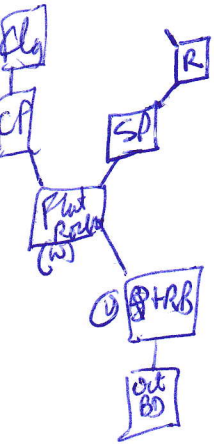
hands → hole D

hole S (iris blocked)



Khaki trousers  
 blue jacket  
 Mch

Stone door (goggles) → "Speak, friend, and enter  
 rabbit on ground under arch of stairs.  
 enter courtyard. (door doesn't unlock)  
 Eytch)  
 Say "mellon" to door.



[Outsd the Back Door] throws bushes E, Playstone path N & S (black S)  
 N → [By the Raspberry Bush] bush, W trellis (on house)  
 E & N bushes, NW avoid area, chattering in bush.

x bush (2 squirrels in bushes E, near bush, they don't see y, then they do, "Kroch kroch" joke hunt.

x trellis (U & done, nothing growing on it) x done (observatory, closed)  
 U → [Dome Ledge (east)] D, NW, SE, ledge.

SW [Dome ledge (S)] S (wall of house) W (balcony, leap), NW, NE.  
 x balcony (rarity). SW [Dome ledge (west)] jump option?, NE, SE.

NE [Dome ledge (W)] jump option, SW, SE.  
 // jump west → [Balcony] up, jump e, S wall has jump white square,  
 socket, glass shelf (palm tree etching)

NW of bush → [By the Plat Rock] fat rock, S (window to here (closed)).  
 path N & NW. SE to bush. Window is dusty & sooty.  
 flat rock ground is dry up. (dark rock) → den is empty.

NW → [Cleared Pathway] N & SE. N → [Clearing] N to steep plateau,  
 W to grove of aspen trees. path S. bushes. N (slope is too steep)

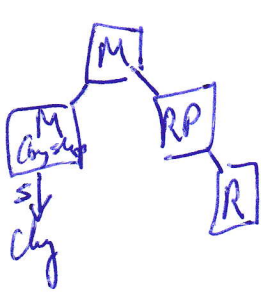
W → [Aspen Grove] yellow grass, lost all sense of direction.  
 n [white rabbit] "I'm late" (time is 3:32 on his pocket watch)

nw → Clearing. // NE of Plat Rock → [Straight Pathway] n to water, SW to rock.  
 NB → [Roavie (across from the sycamore grove)] creek NW + SE, steep + deep,  
 trees across. closest gap. path NW + U, narrow path SW.

nw [Roavie Plate] loose stone, path NW (U), SE (D). x stone (golf ball size)  
 nw [Mesa (by the waterfall)] waterfall, path, leaving branch (D in ravine)

Sooty on branch, path SE (D), next to SW.  
 x branch (2 aim lights away), tape recorder in it. (only a stone's throw away from dopping.)

// @ sycamore view x trees (liked to climb them as a boy, wanted seed pods in autumn,  
 see the dog on the straight pathway. // SW of mesa → [Mesa (by the downward slope)]  
 S to chry, W to aspens, sheer cliff.



Bathroom (goggles) - fruit, tub filled i tools, quaffle on cabinet?

(African grasslands on other side?) say "hello" (sounds 3 times)

x train (Someone in the kitchen i Diner?)

x web ("Some Squirrel")

/ say "zip-a-doo-dah" in kitchen  
- silver key on back of chair cabinet

~~fetch~~ (silver key) -> nil.

11:11 ("Seven Percent Solution" (movie) Friend hypnotizes Hobbes, swinging a pocket watch.

10 min; Smir work

(:11 = :03 (from Feb) + 8 (from Maxwell)

swing watch. say "X: X" & conductor.

6 min, 3 min to store

Wahus + the Carpenter (boo goo kjoo)

"Ma-a-a!"

put frames in outlet

Stewie, baby hippo looks i longing at rubber duckie.

- small cloth sack for Stewie (peg feet on bot), duckie returned, dirt lost.  
Sack for gold thread i tiny fuzzy die. Open white chess pawn + 5 gone tiles.  
Tiles like Mah Jong (eye; 2 ears; 3 noses; 4 mouths; 5 heads; works on tiles)

eye: Imagination Reveals Possibilities  
ear: Compassion Summons Understanding  
nose: Memory Finds Truth  
mouth: Curiosity Tests Adventure  
hands: Connections Build Strength

man: zoomie; 40 min

John for carriage?  
(or \$10)

~~Princess~~ "Knight Ruyter"

Jackson Beauregard to find.

- leap, duck feet together twice (craydon)  
- picked up dog from airport; turned off her cell; get white tap shoes.  
- bird drops pawn.

tap dance in Studio -> business card "DOLLY LEVI  
Sharon Taught How to Tap Dance"

- Meet her on the other side of the wardrobe. Buy this card + wear  
your tap shoes - Dolly"

Uckoo: 6:12

- Royal Wedding (dancing with a coat rack, dancing on the  
walls + ceiling too!)

love Ballroom i rack (skylight?) (buying skirt from wardrobe?)

fetch (business card) = nil.



- 2:30 - Tootsie (Tomato costume)
- 3:30 - WKRP (Flying turkeys episode) 3:28
- 3:45 - Simpsons (Sideshow Bob sings "H.M.S. Puffin")
- 3:15 - Bewitched (twinn eye)
- 4:30 - "Up Up and Away" (balloon) Sing "up up and away"
- 5:30 - Moonlight Sonata
- 6:30 - "West Side Story (daisy at gym)
- 7:30 - "Funky Nemo" (daddy fish footy for sm)
- 8:30 - "Blueberry Hill" (Pat Donahue Sing "blueberry hill")

blades sing "The Happy Wanderer"  
 new - ~~for~~ (not important)

dimple/cheek, face, hair, nose, ears  
 my arms/hands, legs/feet, thumbs

turn to - package (K McMillan)

~~price~~ \*27398

x desk (open drawer - 2 audio cassettes (red label + green label) -  
 - put slippers in indentation, push slipper (skylight opens, ladder)

- whistle "Buzzi" (both cassettes put to recorder)  
 - no 'road', 'stick', 'pole' door ballroom + coat rack (white LV)

[Attic] above Dura: trunk, statue of elephant, wardrobe E  
 trunk: (3 labels: green, white, red)  
 green 'MOSES', smell: pine  
 white 'SUPPOSES', smell: coconut  
 red 'NOSES', smell: roses

white trunk of elephant is flexible.  
 then white trunk (it wants to grab stuff)  
 - give duckie to elephant (smells it, rejects it)

E [Wardrobe] → [Aspen Grove] (rabbit 3:32) x objects (dym, from stuff?)  
 (only if wear goggles) - all beige

hair conditioner smells like pine cologne!

hair conditioner ⇒ opens white latch.

latch  
 keys { play red tape in recorder (at store)  
 green

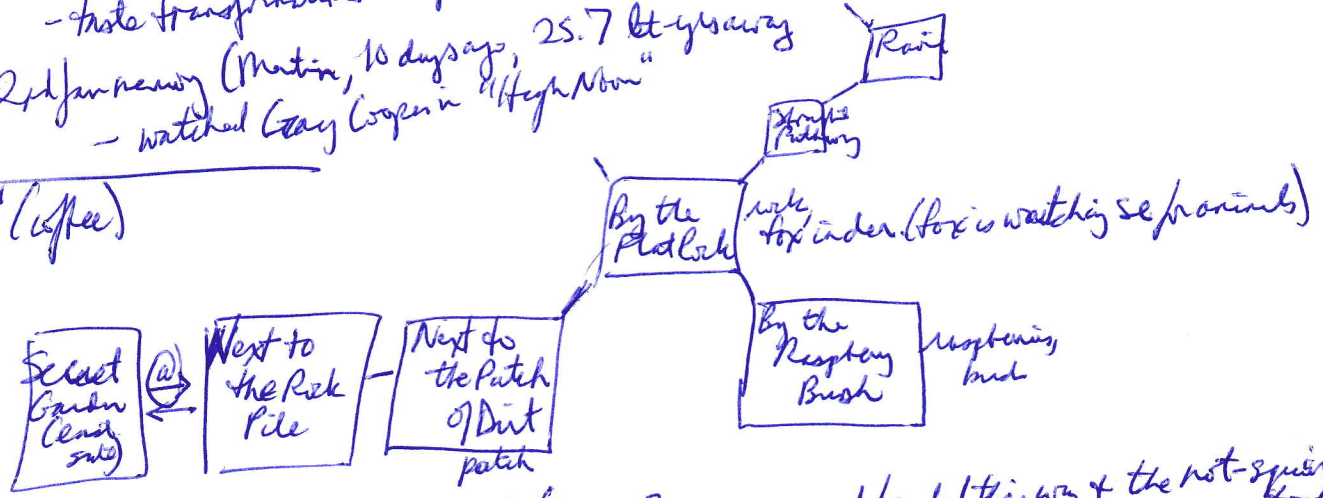
x badge - lie on couch/sfp, sleep → [dream] Martin  
 X-matter ("remember" thru headphones)  
 wave fan - take has had (It's as if you're not really here)  
 dream (photos on dress) - tune into Rachel  
 trees + mist (fairy circles you) - you feel connected.

machine (measuring box: door, start btn, stop btn, red-convex lens in door.  
 box on stand (tripod), gyroscope, turntable; takes no longer objects)  
 - one leg broken; lens pointing west. Box is a motor/generator in jukebox  
 Copper coil punch + top of base.

**Inventory**

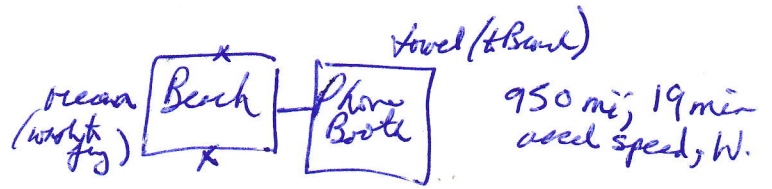
nose itches inside, windows  
 for memory (akin 'Antheik' (grand E. Cuyler (long); they love the tales  
 - those transformations? perhaps vortex sensed. Should have wound aft breeze to magnification effect?  
 2nd journey (Martin, 10 days ago, 25.7 kt yr away  
 - watched Gray Cooper in "High Noon"

**"Bitter" (coffee)**



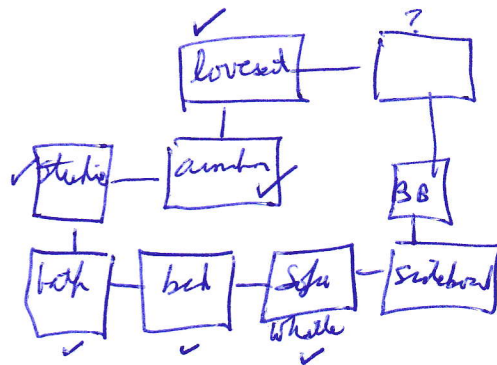
- on entry to Ravine = squirrel (digging? squirrel seed headed this way + the not-squirreled took it...)
- at Mesa (by the downward slope) = old woman + girl on blanket (Grandmother sensed you?)
- 'start yr work in a high place, in light of rising sun' (girl is 18 yrs old  
 (w/ headphones, hear they are making a journey belt. The belt can bring a shaman home if it is strong enough) 5 times must be seen, one per rope. (safety weaving of spirits)
- after Rama dances, the wind spirit comes (you must wear the belt)
- get spirit; one end of belt turns yellow





Swim (jellyfish on foot!) pee on jellyfish (swears at you in Portuguese, 'curse', 'fiddler')  
 Sing "Three Little Maids". / dock suggests "9:00"

9:04 - "I've Been Workin' on the Railroad" 'Dinah isn't you blow you horns..'  
 105, 08  
 9:15 - whistle SW. 9:30 whistle SW. 9:40 whistle SW. 9:16 (whistle SW) 26 (whistle W)



"Web Site Under Development"  
 "Goo goo koo joo" / Dog forgets to say "Di Maggio"  
 blow whistle @ Fourth Level (of stairs) ⇒ picture slide + reveals safe.  
 Julie takes 2 items from safe; touch wheel, wheel falls out, spokes chatter out, Julie puts items back in safe.  
 Mr T gives you chippis (died on Oct 13, 25 yrs ago, last explosion; this could be dangerous)  
 slinky gets horrid (dang; one break for small) put small spurs in drawer.

sweet (Paganini still there)  
- cat likes fish, chicken, dairy

grasshopper  
jump

~~4x3 = 12 + 2x4~~  
(4x3) + (2x1) = 14 (

Fox: Vannoz Pierdo  
Vanov

new car  
~~steep~~ (low) low  
new dim low  
gin (stop) unit  
boxed straw ice  
shystr straw ice

take water → no effort  
put water on shelf → cube rot 1/4 from N to S. [W3, U6, E4, S2, N5]

take water → 1/4 N/S x 2; grind; 1/4 E/W //  
1/4 E/W (hole), 1/4 E/W; grind; 1/4 clockwise //  
1/4 clockwise x 2; grind; 1/4 S/N (hole) //  
1/4 S/N x 2; grind; 1/4 E/W //  
1/4 E/W (hole) 1/4 E/W; grind; 1/4 CW //  
1/4 CW x 2; gr; 1/4 S/N (hole) //  
1/4 S/N x 2; gr; [stop].

put water on shelf → gr; 1/4 N/S x 2 (hole). [E3, U6, W4, N2, S5.]

take water → 1/4 S/N, x 2; gr; [stop].  
put water on shelf → gr; 1/4 N/S x 2 (hole).

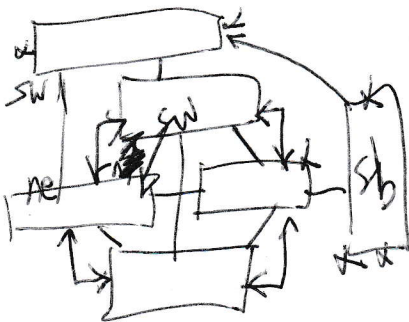
[E3, U6, W4, N2, S5]  
take ear (hole S; gr E; h W). [S3, E6, N4, D2, U5].

take eye (hole S) [E3, N6, W4, D2, U5]

take nose (h S; gr EU; h W; h N). [W3, S6, E4, D2, U5].

take mouth (h S; gr EU; h W; h N; h E). [N3, W6, S4, D2, U5].

take head (h S; gr EU; h W; h N; h E, gr US; h D) [N3, U6, S4, W2, E5].



Rechel says 'Home = the page'  
dropping anything in Aspen Grove → lose it.  
11:32 (from mtg)  
- cat documentary  
7:24 ('Some Kitten')



(buds alive in Derry Km)  
Sing "Zip-a-Dee-Do-Dee"  
(moves the cabinet.)

# fact sheet

## employment standards act

Newton CCW (still 3:00)

3:32 - Sesame Street "Rubber duckie I'm awfully  
fond of you"  
Sing "rubber duckie"

**MINIMUM WAGE**  
(revised January, 2004)

chickoo shows 11:11

### What is the purpose of the *Employment Standards Act, 2000 (ESA)*?

The *ESA* sets out the rights and responsibilities of both employees and employers in Ontario workplaces.

### What employees and employers are not covered by the *ESA*?

Most employees and employers in Ontario are covered by the *ESA*. However, the *ESA* does *not* apply to certain employees and employers, including:

- Those in sectors that fall under federal jurisdiction, such as airlines, banks, the federal civil service, post offices, radio and television stations and inter-provincial railways
- Individuals performing work in a work experience program authorized by a school board, college of applied arts and technology, or university
- People who do community participation under the *Ontario Works Act, 1997*
- Police officers (except the Lie Detectors part of the *ESA*, which *does* apply)
- Inmates taking part in work programs, or people who perform work as part of a sentence or order of a court
- People who hold political, judicial, religious or trade union offices.

Employees of the Crown are excluded from some (but not all) provisions of the *ESA*.

For a complete listing of other job categories not governed by the *ESA*, please check the *ESA* and its regulations. Regulations set out exemptions to the law, special rules and details about how to apply certain sections of the *ESA*.