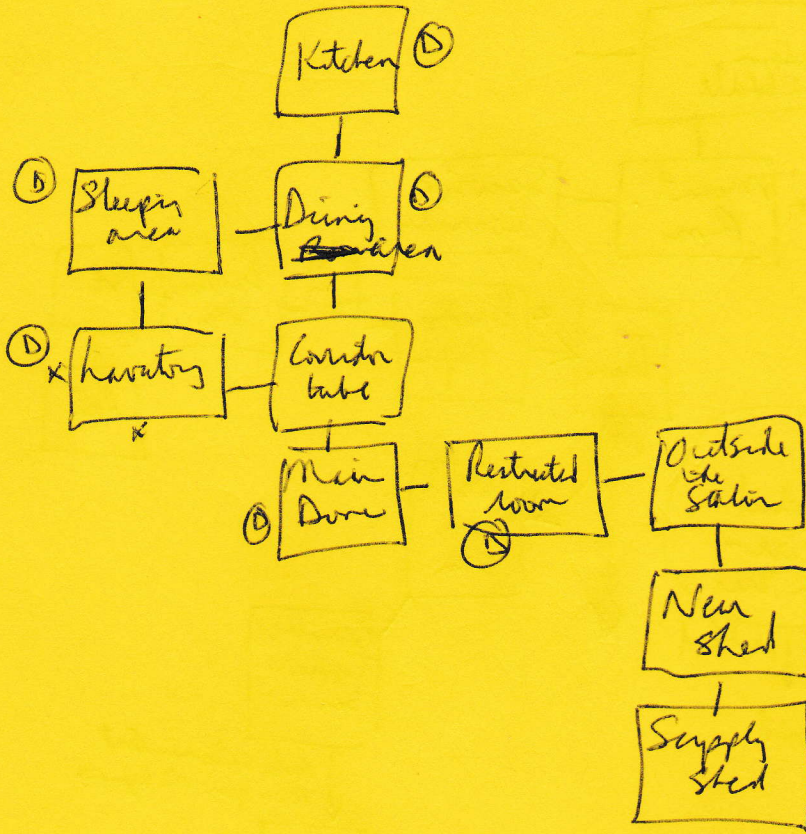


ESCAPE FROM
ICE STATION HIPPO

exam 12



(IHPSO7)

- UUUU
- 2 UDUU
- 3 UUDD
- 3 UUUD
- 3 UDDU

- 1 (1)
- 2 (123)
- 3 (234) → (3)
- 4 (4)

(we want 2 + 3 down)
1 + 4 up

- 2nd run
- gloves (+1) @ Main Dome
 - lay (+1), coat (+1) @ hall
 - coat step, @ Dining
 - phone @ Kit
 - take Dredge (+1) @ floor, The habitat battery

shiver of paper
(at last)

- take lay = +1
- take gloves = +1
- take coat = +1
- take bunker = +1