

DETECTIVE LAND

① General Director's Office clerk

New house Architect Fishing Boat
 enter fishing boat
 made (open)
 open with crowbar
 enter → end of old tunnel

old sailor (partner was Acemita)
 put the fish
 ask about tunnels → map!

Swanby office of a publishing company
 receptionist
 Kneekleswith

North end of a sewer
 enter here ↓
Large basement room with aquarium
 Senter Brinkman

you are Mr Pose

Seedy-looking Pawn Shop out
 Mr Takahashi

office of a fancy law firm - J Epsom Esq.
 Mary Jo has Belle

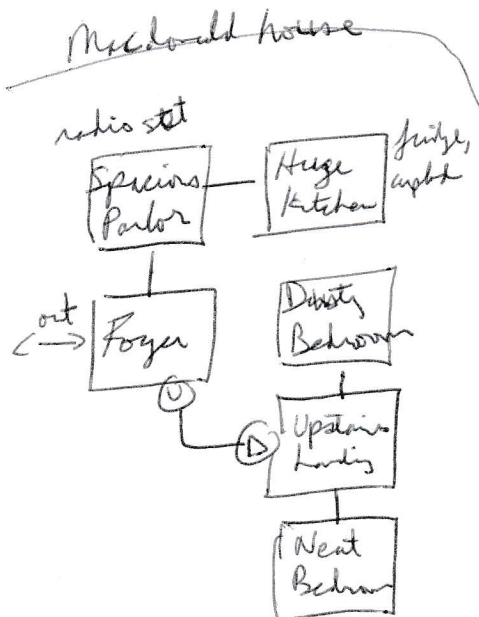
North end of a long hallway look around, all long

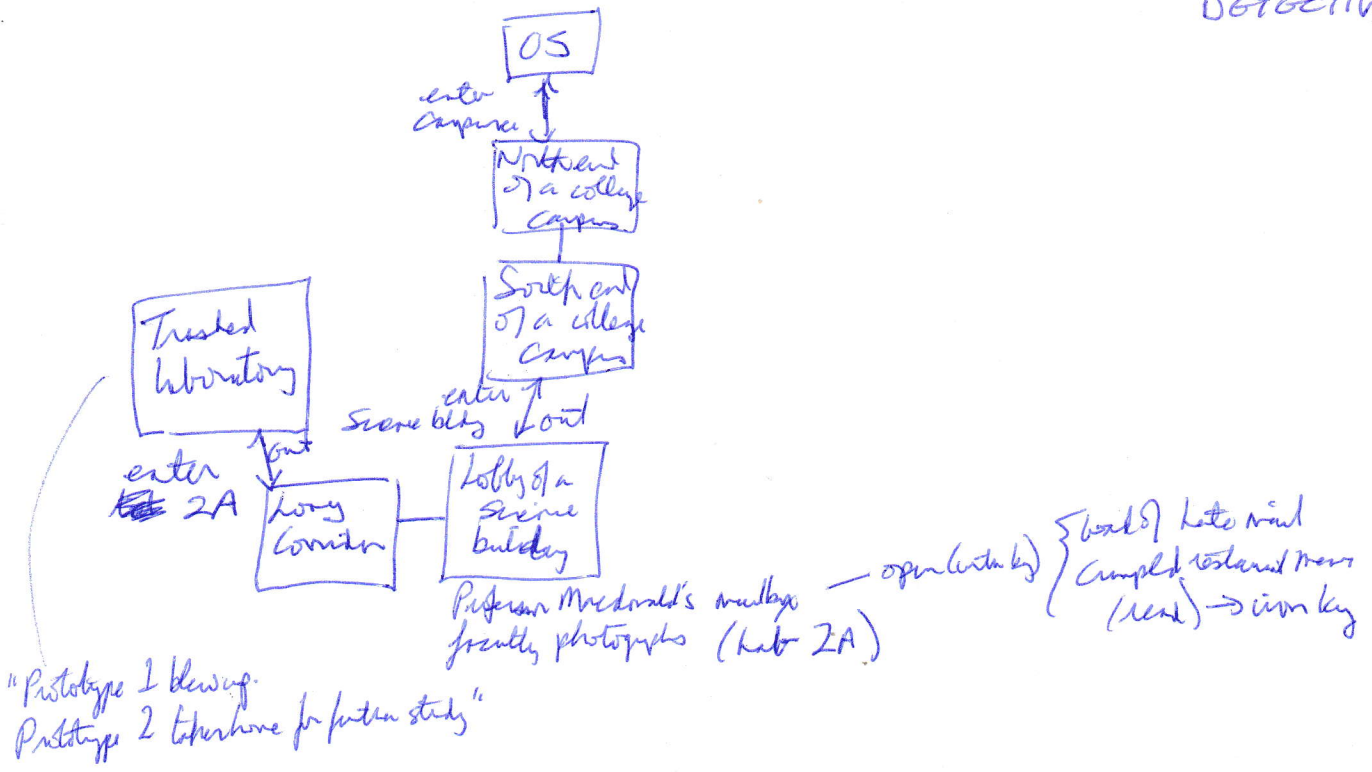
Wood-paneled Study - long (small) - Oblong Dining Room

down (stable to open pad) ↓
 North ↓ descent
 up
Bottom of ladder, leading dark basement room

made (open) back of an old tunnel enter cellar door
 ↓
Slight Bend ↑ bare cellar plants
 ↑
old tunnel → Stinky Sewer → ink sign

choose 3 spicy toppings for the pizza!





"Prototype 1 blew up.
Prototype 2 taken home for further study"

PC is Larson Rose